



HOLY LASER



Established : June, 2006

Registered capital:10 million Yuan

Number of employees:More than 120 people,80 people with college education

R & D team: 35 people

Service Content:Full set of industrial laser application solutions

We have sold our machine to more than 50 countries all over the world, like, USA, UK, Italy,Germany, Brazil, Russia, South Korea, Mexico, Spain, Canada, Finland, Estonia, India, Indonesia, Egypt, Singapore, Laos, Myanmar, Vietnam, Mongolia, Mexico, Brunei, Thailand, Pakistan, Vietnam, Singapore, Iran, Turkey, Bahrain, France, Denmark, Sweden, Netherlands, Poland, Norway, Pakistan, Kuwait, Saudi Arabia, United Arab Emirates, Romania, Bulgaria, Spain, Portugal, Morocco, Poland, Monaco, Algeria, Malaysia, Japan, etc.

Products: Laser welding, laser cutting, laser marking,3D laser inside engraving, automation, robotics, 3D printers and other series of equipment

Patents and certifications: We have 1 invention patent, 21 utility model patents, 6 appearance patents and 4 computer software copyrights.

Subsidiaries: Suzhou Branch, Wuhan Branch, Shenzhen Branch

Offices around the country: Set up offices and distributors in many key cities across the country, serving radiation throughout the country.



Split Portable Fiber Laser Marking Machine

- Designed for high-speed laser marking on metal and plastic parts, Split marker laser marking machines are a great solution for marking items such as promotional articles, gifts and dataplates.
- Split marker laser marking systems are easy to use and virtually maintenance free.
- The included EZCAD software functions like a printer driver, enabling you to operate the laser marker from your own graphics software and send jobs directly to the software making high-speed laser marking as easy as printing.

■ Fiber Marking Material Gallery

Aluminum



Black Oxide



Brass



Stainless Steel



■ Technical Data

500mm Up and Down Lift

Light Path

Galvo Head

Laser Case



| Model | Split Portable Marker |
|-------------------------------------|---|
| Laser Power | 20W 30W 50W |
| Marking Speed | 7000mm/s |
| Marking Area | 50 x 50mm 110 x 110mm(Standard) 175 x 175mm 220 x 220mm 300 x 300mm |
| Laser Source brand | Raycus / MAX / IPG |
| Operating Voltage | 110V/220V |
| Wavelength | 1064nm |
| Supported Windows Versions | Windows XP,7,8,10 |
| Software | EzCAD (easy to use) |
| Supported Graphical & Vector Format | PLT, DXF, AI, SDT, BMP, JPG, JPEG, GIF, TGA, PNG, TIF, TIFF |
| Repeatability | ±0.003mm |
| Beam Quality | M0 |
| Marking Depth | 0.3mm |
| Min. line Width | 0.015mm |
| Min. character Size | 0.15mm |
| Cooling | Air cooling |
| Total Power | ≤800W |
| Packing size | 91.5*45.5*82.5cm (L*W*H) |
| Gross weight | 55 KG |

Fiber Laser



Raycus



MAX



IPG

Minimal ownership costs

The UltraMarker laser marker includes a built-in fiber laser head that is highly reliable and practically maintenance free. The energy consumption of the machines is very low. Costs for consumables, spare parts or machine maintenance are non-existent.



Focus Finder for Laser Focusing

Cloudray galvo laser marking machines can be equipped with a focus finder to make focusing the laser much easier. The focus finder will not only save you time during set-up, but helps ensure marking precision. The focus finder employs a second "pilot" laser to accurately determine the correct working distance without any tools.

Laser Safety Goggles

Laser safety goggles are a must-have for protecting the eyes when working with class 4 laser machines.

Wavelength: 1064nm

Optical Density OD4+

CE Certification

Available for: Cloudray Fiber Marking Machine



■ Benefits of the Split Portable laser marker

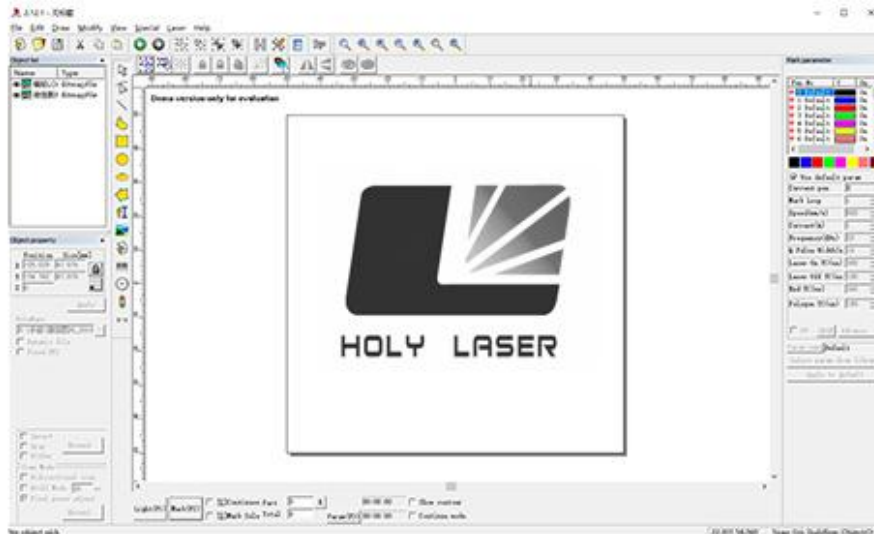
A laser marker that lowers cost per mark

The Split Portable laser marking machine is ideal for marking large quantities of small- to medium-sized parts such as pens, USB drives or dataplates. High-speed processing, ease of use and minimal maintenance help you lower cost per mark.



As easy as printing

The original laser marking software EZCAD (Beijing JCZ) acts like a printer driver. Users can design their graphics freely. The software can support 265 "pencils", which used to draw graphic and can be set different processing parameters. Common types of images and vector images are supported. (bmp, jpg, gif, tga, png, tif, ai, dxf, dst, plt.)

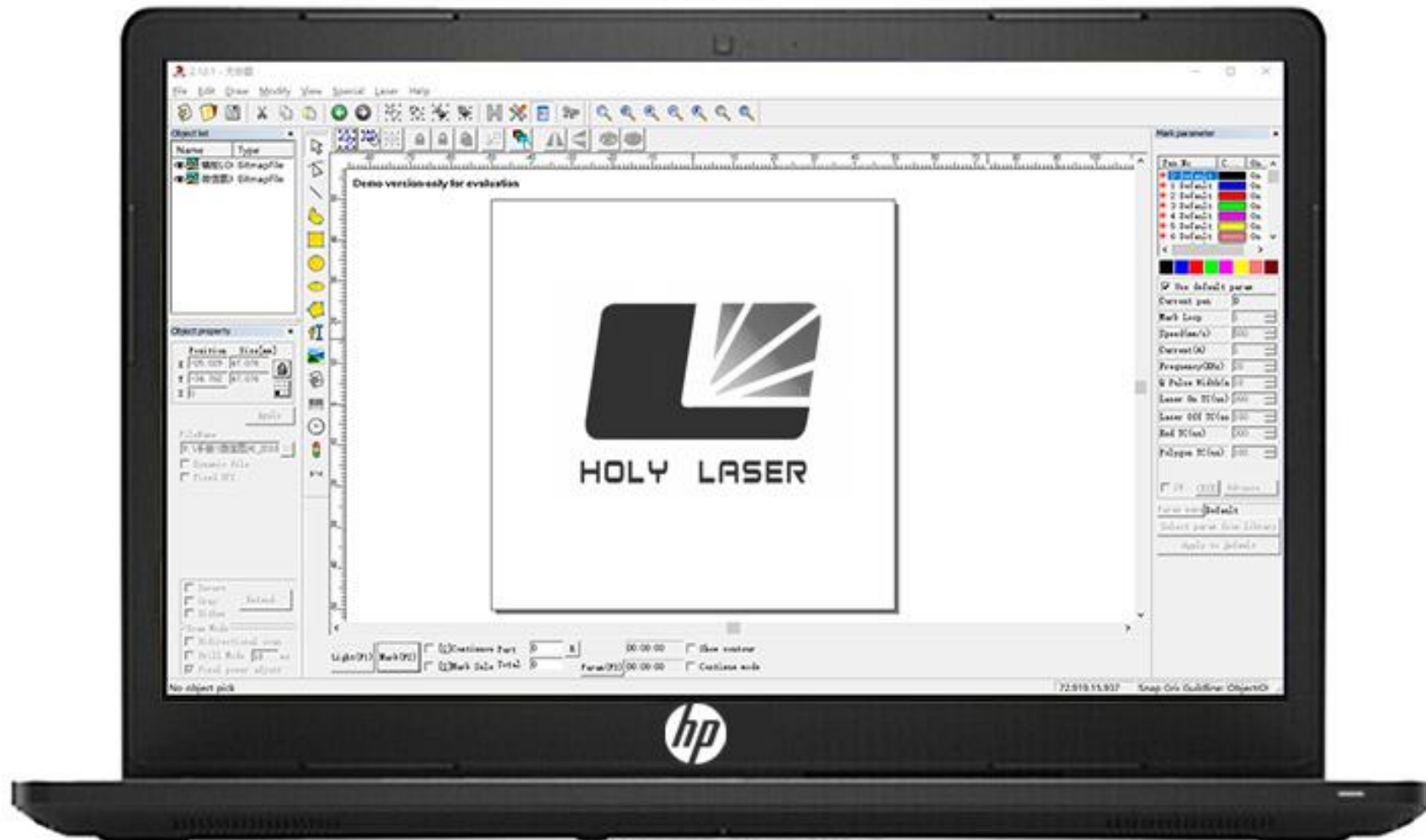


Fiber Marking Card

Original BJJCZ



LapTop



Galvanometer



High Stability, High Reliability, High Quality

| | |
|--------------------|----------------|
| Aperture | 10mm |
| Marking Speed | 7000mm/s |
| Positioning Speed | 15000mm/s |
| Typical Scan Angle | ± 0.35 rad |
| Nonlinearity | < 0.5 mrad |
| Tracking Error | 0.15ms |

F-theta Lenses

Different Working Field Sizes



| | |
|------------------------|--|
| F330 8.66X8.66 inch | |
| F160 4.3X4.3 inch | |
| F63 1.97X1.97 inch | |

F-theta Lens



- Small Focus Spot
- Low Absorption
- Deep Edge Marking
- Long Life Span
- Various Specifications

We offer you the following F-theta lenses for our galvo marking lasers

| | F-63 | Standard:F-160 | F-254 | F-330 | F-420 |
|----------------|------------|----------------|--------------|--------------|--------------|
| Working fieldw | 50 x 50 mm | 110 x 110 mm | 175 x 175 mm | 220 x 220 mm | 300 x 300 mm |
| Focus diameter | ~14µm | ~27µm | ~42µm | ~42µm | ~72µm |

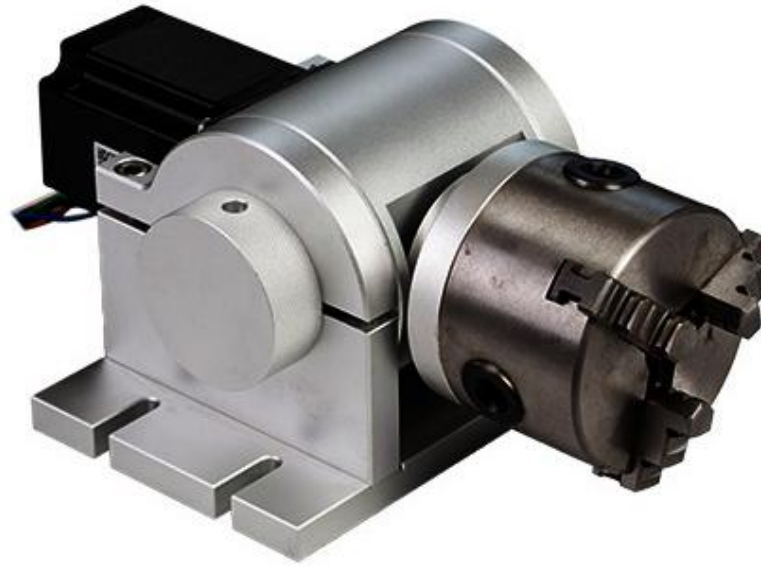
- 
- **High Speed Scan Ability**
 - **Well-known Parts Support Trustworthy Quality**
 - **Over 12 Years Research Experience**
 - **Improved After-sales Service 24 hours online fast Response**
 - **Self-Developed Softwares & Laser Source**
 - **2 Years Warranty**

Working Table

X/Y Axis 220*300mm



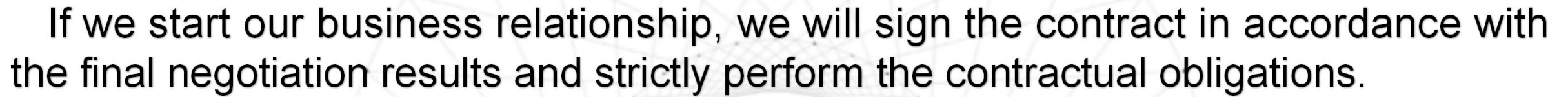
Rotary Unit



Marking cylindrical and curved objects with the laser requires a rotary engraving unit. With the rotary engraving unit, your markings are cleanly and precisely put on the rotating object.

■ Business Terms

- Delivery Terms: FOB NINGBO
- Quotation Validty: 10 Days Since Quote Date
- Payment method: Bank to Bank transfer(T/T) or L/C at sight
- Payment Terms: 30% Deposit,balance before
- Deliveryt Time: 7-10 working days after payments



If we start our business relationship, we will sign the contract in accordance with the final negotiation results and strictly perform the contractual obligations.

We provide 2 Years warranty (except for wearing parts), we will respond in 24 Working hours for after-sales problems. If the problem cannot be solved remotely, after our technician confirms that it is necessary to send the damaged parts for repair or replacement, we will update maintenance progress within 48 hours after receiving the parts !

We will provide lifetime technical maintenance and software service upgrades !



PACKING:

- Waterproof membrane packing inside
- Professional Export Standard Fumigation-Free Plywooden Case

SHIPPING:

- Air shipping
- Sea shipping
- Land transportation (Mainly for Moscow,etc Customers)

Strategic Partners





Thank you!

0086-152-6864-2858 | sales04@holylaser.com | www.holylaser3d.com